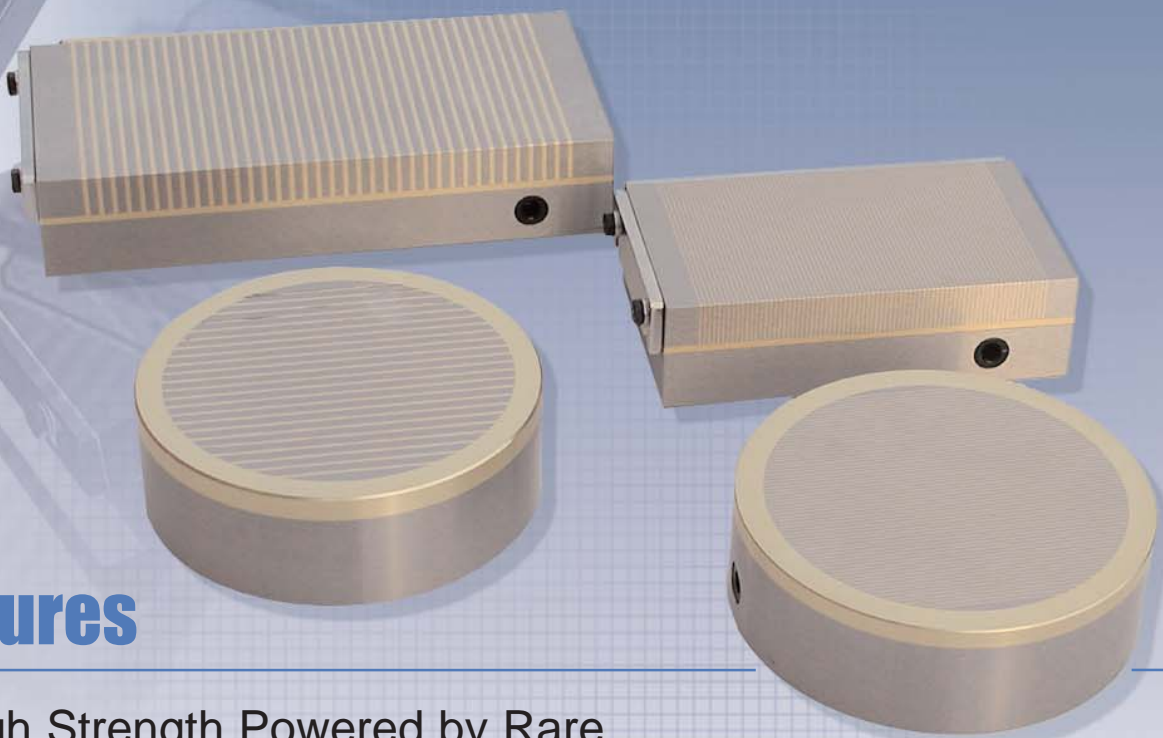


**NEW**



## **NEW STANDARD range of permanent magnetic chucks**



### **Features**

- High Strength Powered by Rare Earth Neodymium Magnets
- 1 Year Warranty on parts and labour
- High precision - Guaranteed build, sealed & lubricated
  - Clamps supplied

# Rectangular Magnetic Chucks

**Standard Pole** Pole Pitch = 4.0mm Steel / 2mm Brass  
Force = 80N/cm<sup>2</sup>

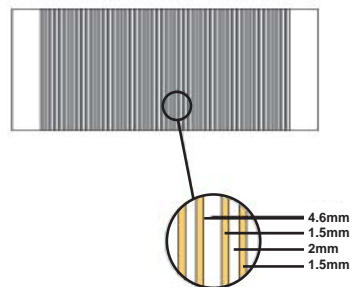
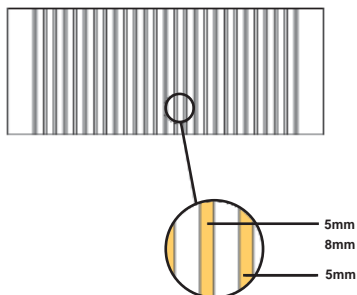
**Fine Pole** Pole Pitch = 1.5mm Steel / 0.5m Brass  
Force = 80N/cm<sup>2</sup>

## Eclipse

Product No.	W(mm)	L(mm)	Ht.(mm)	Wt. (kgs)
ERSP1018	100	180	50	8
ERSP1325	130	250	50	14
ERSP1530	150	300	50	18.5
ERSP1535	150	350	50	21.5
ERSP1545	150	450	50	27.5
ERSP2060	200	600	50	50

## Eclipse

Product No.	W(mm)	L(mm)	Ht.(mm)	Wt. (kgs)
ERFP1018	100	180	50	8
ERFP1325	130	250	50	14
ERFP1530	150	300	50	18.5
ERFP1535	150	350	50	21.5
ERFP1545	150	450	50	27.5
ERFP2060	200	600	50	50



# Circular Magnetic Chucks

**Standard Pole** Pole Pitch = 4.0mm Steel / 2mm Brass  
Force = 80N/cm<sup>2</sup>

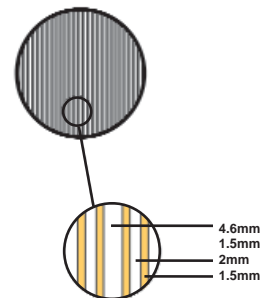
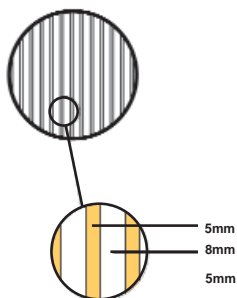
**Fine Pole** Pole Pitch = 1.5mm Steel / 0.5m Brass  
Force = 80N/cm<sup>2</sup>

## Eclipse

Product No.	Dia. (mm)	Ht.(mm)	Wt. (kgs)
ECSP100	100	50	3
ECSP125	125	50	5
ECSP160	160	50	7.5
ECSP195	195	50	11
ECSP255	255	50	16
ECSP310	310	50	24
ECSP350	350	50	27

## Eclipse

Product No.	Dia. (mm)	Ht.(mm)	Wt. (kgs)
ECFP100	100	50	3
ECFP125	125	50	5
ECFP160	160	50	7.5
ECFP195	195	50	11
ECFP255	255	50	16
ECFP310	310	50	24
ECFP350	350	50	27



Eclipse Magnetics Ltd.

Units 1-4 Vulcan Road, Sheffield, S9 1EW England

Tel: 0114 225 0600. Fax: 0114 225 0610

E-mail: sales@eclipse-magnetics.co.uk Website: www.eclipse-magnetics.co.uk