

## DEMAGNETIZERS

These demagnetizers have been designed to remove the remnant magnetism from the pieces after having been in contact with a magnetic field.

### TABLETOP MODELS

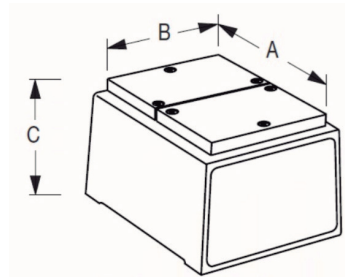
This demagnetizer is ideal for workshops as it removes the remnant magnetism from components, tools, screws, bearings, etc. The piece to be demagnetized should be passed over the device.

This model is not designed for continuous use and cannot be connected for more than 10 minutes at one time. It has a thermostat that disconnects it when it reaches the maximum permitted temperature (70°C); it cannot be reconnected until the temperature has dropped to the permitted levels.

Input voltage: 220-240 V / 50-60 Hz.



TABLETOP DEMAGNETIZERS						
CODE	A mm	B mm	C mm	INTENSITY A	POWER V.A.	WEIGHT Kg
70.00.001	160	120	115	1,3	286	5,5
70.00.002	200	170	122	3	660	12

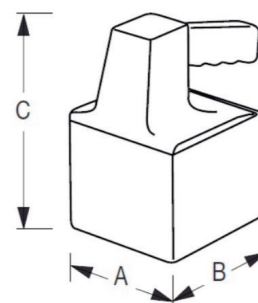


### PORTABLE MODEL

This model is used to remove the remnant magnetism from large pieces. The device should be passed over the piece manually.

This demagnetizer is not designed for continuous use and cannot be connected for more than 10 minutes at one time. It has a thermostat that disconnects it when it reaches the maximum permitted temperature (70°C); it cannot be reconnected until the temperature has dropped to the permitted levels.

Input voltage: 220-240 V / 50-60 Hz.



PORTABLE DEMAGNETIZERS						
CODE	A mm	B mm	C mm	INTENSITY A	POWER V.A.	WEIGHT Kg
70.01.001	106	120	180	5,8	1330	5,5

## DEMAGNETIZERS FOR CONTINUOUS SERVICE

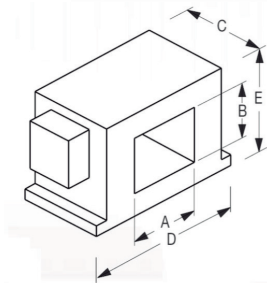
During the manufacturing process of a batch of pieces, they are often subjected to a magnetic field and acquire a certain remnant magnetism. In most situations, to continue or to finish the production, it is necessary to remove the magnetism from these pieces. The most convenient is to use a continuous service demagnetizer.

### TUNNEL MODEL

This demagnetizer is designed for continuous use,

This model is suitable for automatic processes where there is a flux of material. The pieces to be demagnetized should be passed through the inside of the device.

Input voltage: 220-240 V / 50-60 Hz.  
Other voltages and dimensions under request.



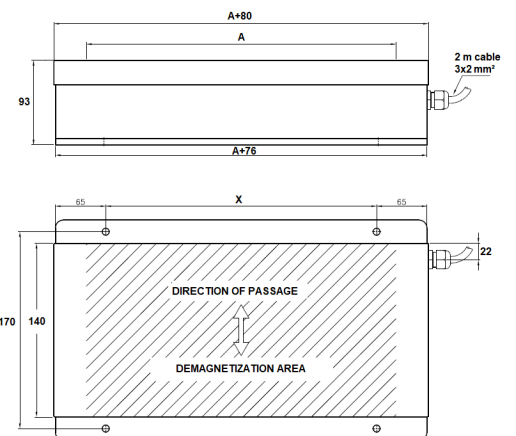
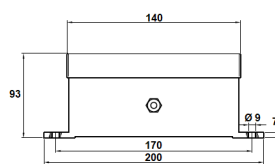
#### TUNNEL DEMAGNETIZERS

CODE	A mm	B mm	C mm	D mm	E mm	INTENSITY A	POWER V.A.	WEIGHT Kg
70.13.005	50	50	100	307	236	3,9	900	15
70.13.012	150	60	200	323	166	3,6	794	27
70.13.017	200	100	200	415	240	10,5	2066	45

### UNDER TABLE MODEL

Continuous service demagnetizers are usually placed under a conveyor belt.

Tension: AC 50/60 Hz ED 100 %  
Operative temperature: 80°C



#### CONTINUOUS SERVICE DEMAGNETIZERS

CODE	EFFECTIVE DIMENSIONS			TOTAL DIMENSIONS			FIXING HOLES		POWER V.A.
	A mm	B mm	C mm	A+80 mm	B mm	C mm	X mm	Y mm	
70.05.002	150	140	93	230	140	93	150	170	470
70.05.004	200	140	93	280	140	93	150	170	560
70.05.005	250	140	93	330	140	93	200	170	720
70.05.003	300	140	93	380	140	93	250	170	880