

2.1 MAGNETIC PLATES

BASIC MODEL: MAGNETIC PLATE

Magnetic plates are used for the separation of ferrous materials from material flows on tapes conveyors, free fall, in vertical and inclined pipes, ramps, etc.

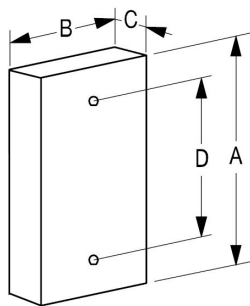
These plates are provided with ceramic or Neodymium mounted in such a way that they generate a deep magnetic field. They are made of AISI 316 stainless steel (EN 1.4404).

For fixing to the system, these plates are provided with threaded holes in the back side. These plates can be supplied with the standard fixing holes or the ones proposed by the customer.

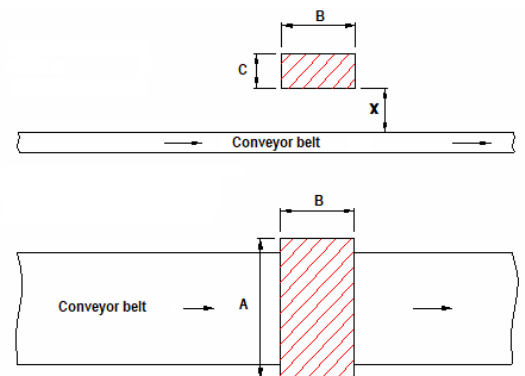
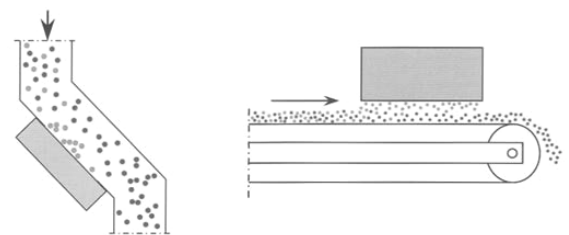
CHARACTERISTICS:

- Design: Solid construction
- Magnetic system: permanent magnets (ferrite quality C8 or Neodymium quality N35)
- Housing: AISI 316 stainless steel (EN 1.4404)
- Watertight
- Surface treatment: polished

Product manufactured according to EHEDG standards, which guarantee the correct hygienic design and maintenance of food production systems.



A mm	B mm	C mm	D mm	Threaded Holes	WEIGHT Kg
75	75	30	50	2 M8	1
275	75	30	250	2 M8	3,7
340	75	30	250	2 M8	4,5
105	105	30	50	2 M8	1,9
210	105	30	100	2 M8	3,9
310	105	30	200	2 M8	5,7
340	105	30	250	2 M8	6,3
145	105	50	100	2 M8	3,8
210	105	50	100	2 M8	5,6
280	105	50	200	2 M8	7,4
310	105	50	200	2 M8	8,2
345	105	50	250	2 M8	9,2
410	105	50	150	3 M8	10,9
445	105	50	150	3 M8	11,8
510	105	50	200	3 M8	13,6
610	105	50	150	4 M8	16,2
765	105	50	200	4 M8	20,3



Distance to the conveyor belt (X)

Dimensions B x C (mm)	BAR Ø 5x25 mm	BAR Ø 5x75 mm	NUT M-16
75 x 30	70 mm	75 mm	55 mm
105 x 30	75 mm	95 mm	70 mm
105 x 50	95 mm	100 mm	75 mm