

2.5 CHUTE MAGNETS

For the iron separation of powder particles and granular products

CHUTE MAGNETS WITH EXTERIOR CORE

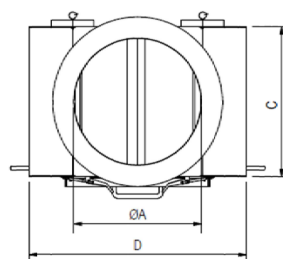
These magnetic tubes are separation Systems designed for the removal of iron particles from raw materials that do not flow easily through the system such as powdered materials and granular products.

The system is installed in a part of the duct that transports the product during the production process. The unit is attached totally in the tube so that it is an integral part of the pipes. These magnetic tubes are characterized by the position of the magnets. These are located almost completely out of flow so they do not interfere with the passage through the duct. The magnetic system consists of two extremely powerful plates that lie on opposite sides and capture the iron particles. They are effective even in a flow that occupies the entire capacity of the tube and continuously.

CHARACTERISTICS:

- Design: Solid construction
- Magnetic part: permanent magnets (Neodymium quality N35)
- Manual cleaning with cleaning drawer
- Housing: AISI 316 stainless steel (EN 1.4404)
- Surface treatment: sandblasting
- With fins DIN 2576 ND10 NW
- High pressure (max 2 bar)

Product manufactured according to EHEDG standards, which guarantee the correct hygienic design and maintenance of food production systems.



A mm	B mm	C mm	D mm	WEIGHT Kg
100	480	153	165	31
150	600	203	255	67
200	700	253	369	130
250	860	303	461	225
300	900	353	511	285

