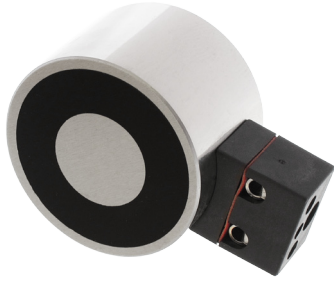


Electro-holding magnet

Energise to hold - 80mm diameter

12VDC or 24VDC Operating voltage

Part numbers
M52183/12vdc
M52183/24vdc



Pull gaps

Air gap (mm)	Magnetic Pull* (N)
0.00	2000.0
0.09	1560.0
0.18	1117.0
0.27	715.0
0.36	567.0
0.59	283.0
1.00	130.0
1.50	6.7
2.00	3.7
4.00	2.0

* +/- 10% at room temperature

To achieve the optimum pull force 100% contact area must be achieved using the recommended armature plate. The force will be affected if other material specifications, thicknesses and surfaces are used, or if the armature fails to make positive contact over the full diameter of the face of the magnet. Where misalignment is likely to be an issue we recommend that an oversized armature plate is used to ensure 100% full contact, this however will reduce the stated pull force by approximately 10%.

Description

Mountings	Threaded holes in rear face
Finish	Bright nickel plated with machined face
Product weight	1.203kg

Technical Data

Typical holding force	2000N
ED rating	100%
IP Rating	54
Standard operating voltage	12VDC (M52183) 24VDC (M52183)
Current	12V - 210mA 24V - 100mA
Power consumption	13.3W

Connection type

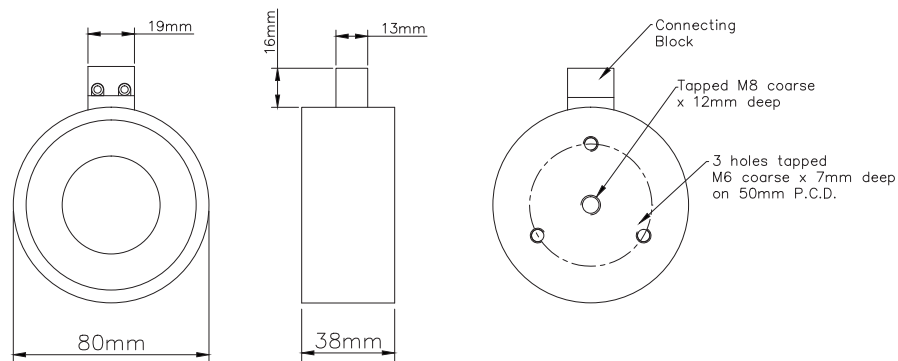
12VDC and 24VDC Two-pole connector

Recommended armature plate



Finish	Bright nickel plated
Diameter	80mm
Height	10mm
Screw	M6
Part No.	M52171/80ARM
Weight	400g

Dimensions



If you have any more questions, require technical assistance and would like a quotation, simply contact us.

www.eclipsেমagnetics.com

Eclipse Magnetics Ltd, Atlas Way, Sheffield, S4 7QQ, England
T +44 (0)114 225 0600 F +44 (0)114 225 0525 E info@eclipsেমagnetics.com

While every effort has been made to ensure the accuracy of the information in this publication please note that specifications may change without notice.



A world leader in magnetic technology



FM31278

A Spear & Jackson Company